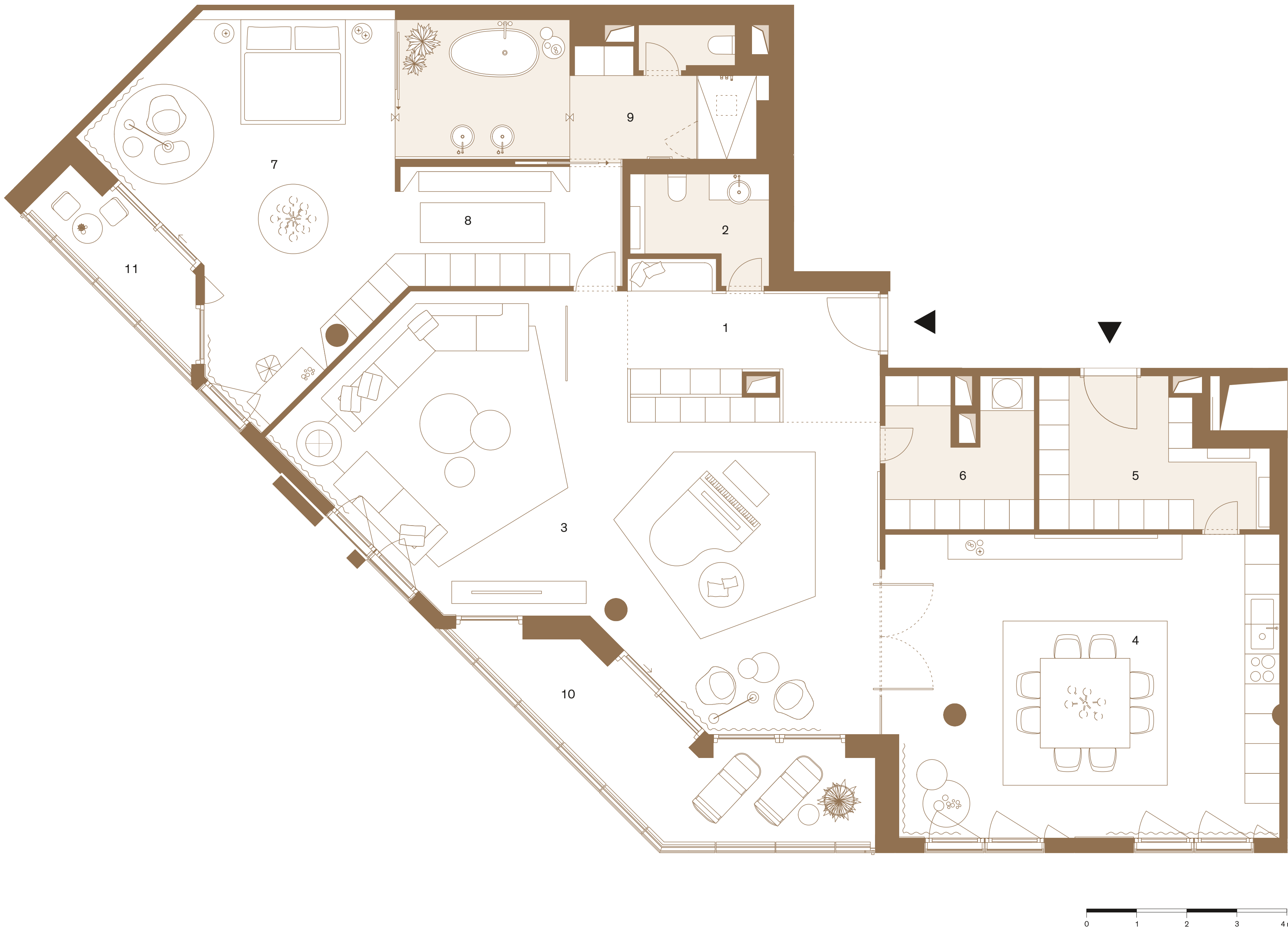


THE PRESIDENTIAL SUITE FOR EVERY DAY

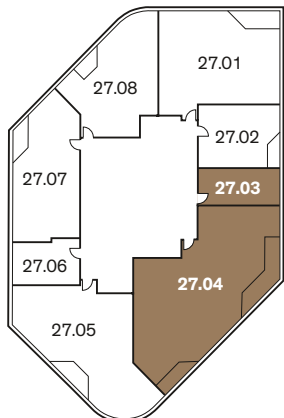
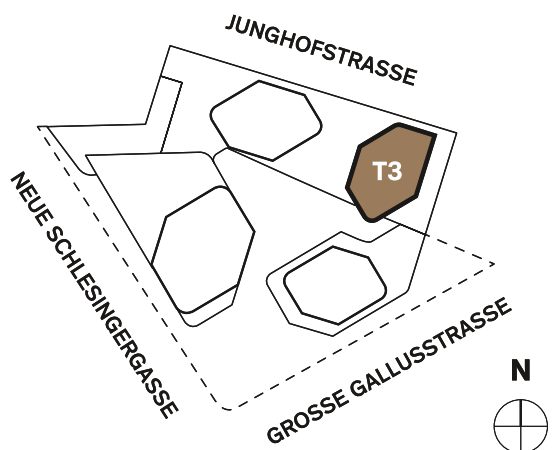


Apartment 27.03/04

Tower 3, 27th Upper Floor
219,55 m², 3 Rooms

| Details | | m² |
|---|-------------------------|--------|
| 1 | Entrance | 12,57 |
| 2 | WC | 5,16 |
| 3 | Living Area | 68,91 |
| 4 | Cooking and dining area | 47,83 |
| 5 | Preparation kitchen | 11,89 |
| 6 | Utility room | 8,47 |
| 7 | Bedroom | 34,97 |
| 8 | Dressing Room | 10,98 |
| 9 | Bathroom | 18,77 |
| 10 | Loggia 1 | 16,79 |
| 11 | Loggia 2 | 5,94 |
| Total living space | | 242,28 |
| Living space according to the Living Space Ordinance (with 50 % of the loggia area) | | 230,92 |

Apartment 27.03/04



PLAN

27th Upper floor

Floor Plan

EXCLUSIVE DISTRIBUTION

T +49 (0) 69 36 00 95 750
living@4frankfurt.de

GP Sales GmbH
Siesmayerstraße 21
60323 Frankfurt am Main
www.4frankfurt.de

A PROJECT BY

Groß & Partner
Grundstücksentwicklungs-
gesellschaft mbH
Siesmayerstraße 21
60323 Frankfurt am Main
www.gross-partner.de

DISCLAIMER

All floor plans and floor space details are subject to change as planning progresses. Furniture, kitchen objects and furnishings are not part of the object of purchase. The agreements in the purchase contract and in the building description are exclusively authoritative.

